

# NEE at the Eastmain Reservoir

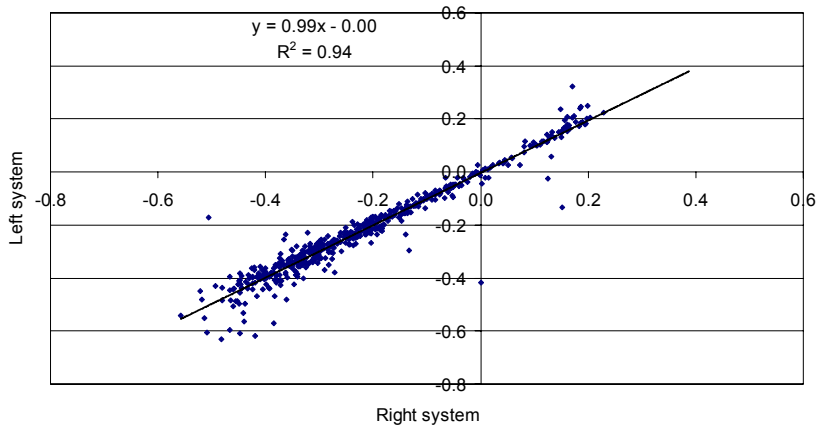
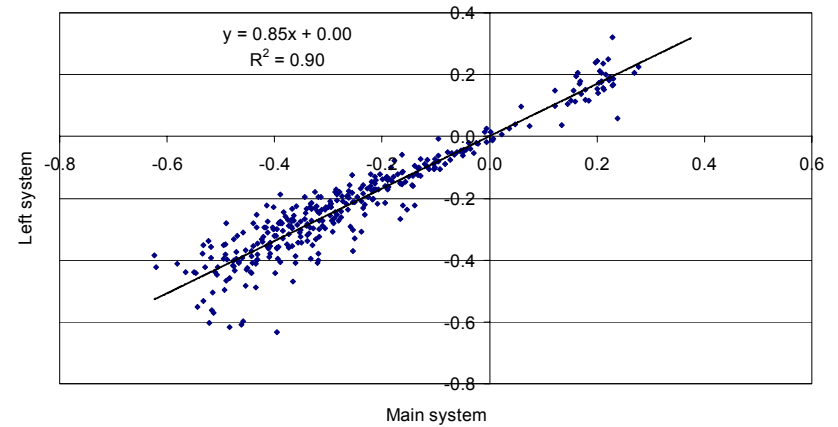
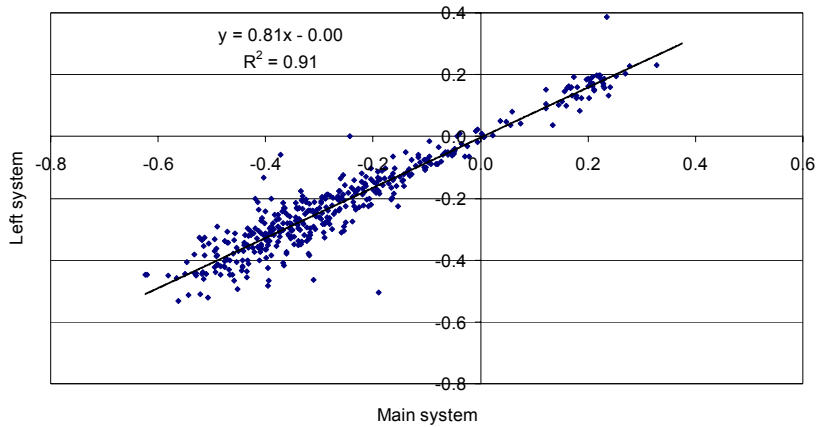
The story so far...

**Dr. Ian B. Strachan**

**Department of Natural Resource Sciences &  
Department of Geography**

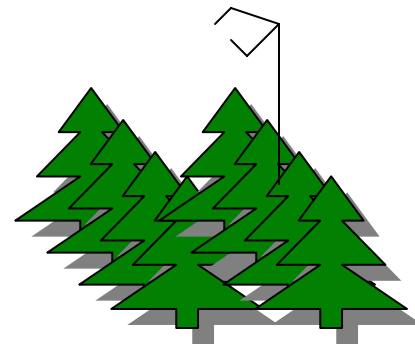
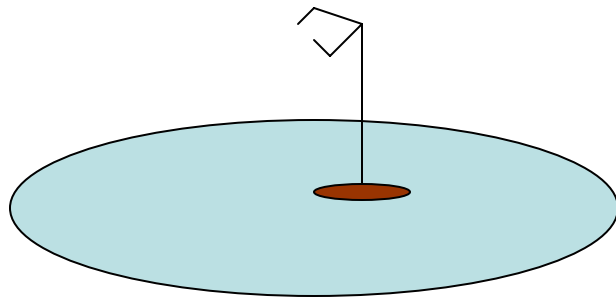


# HQ-EC systems at Mer Bleue



# Methods in brief

Install duplicate systems: one in the reservoir (on an island) representing the flooded conditions and the other within an area which represents the pre-flooded environment



# Site Installation

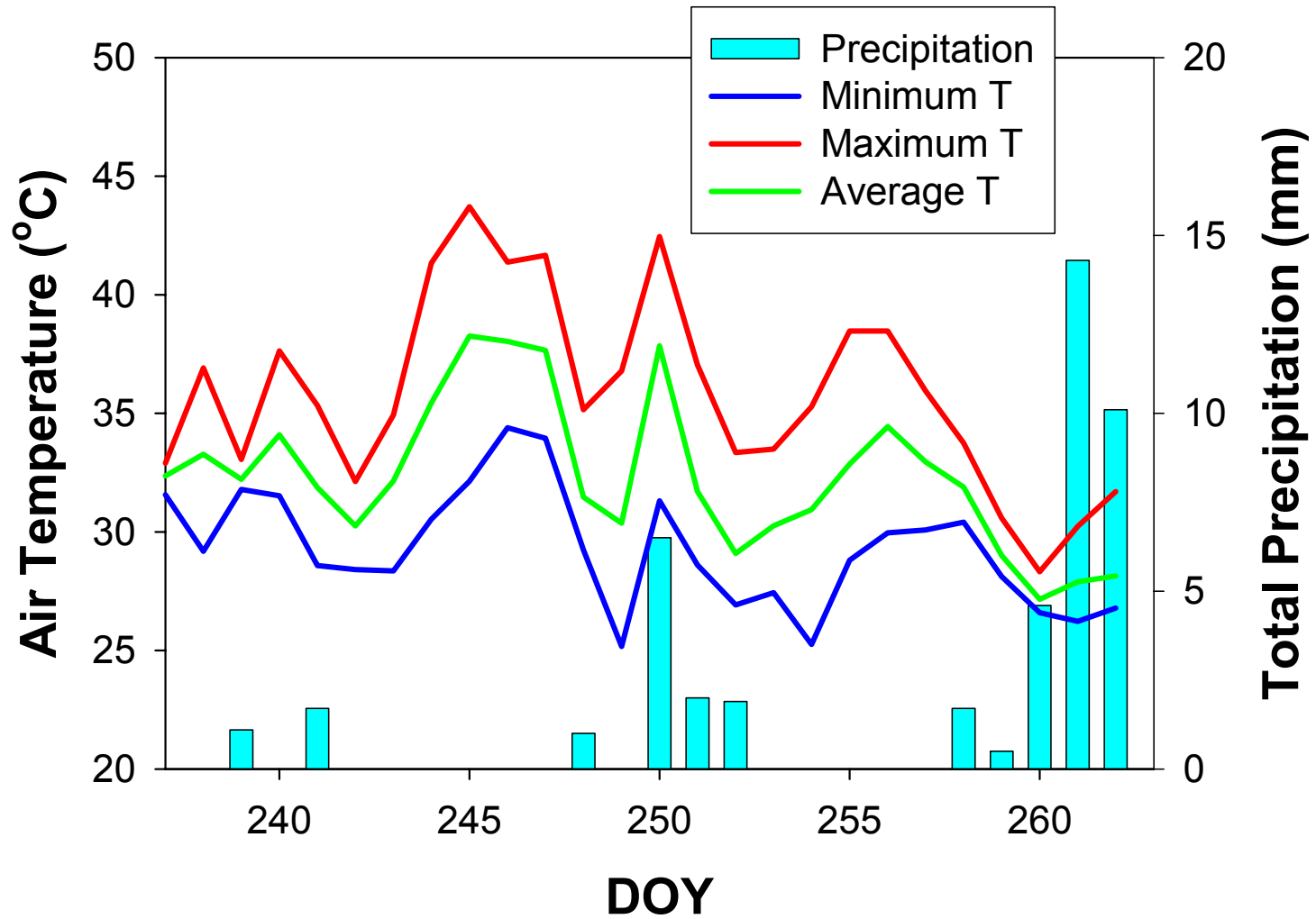
- **Tower Ancrage :**  
July 16th to 31st (Sacha Grenon, J.S. excavation)
- **Scaffolding :**  
August 1st to 4th (AGF Acier)
- **EC system installation :**  
August 12th to 16th

# Forest tower site



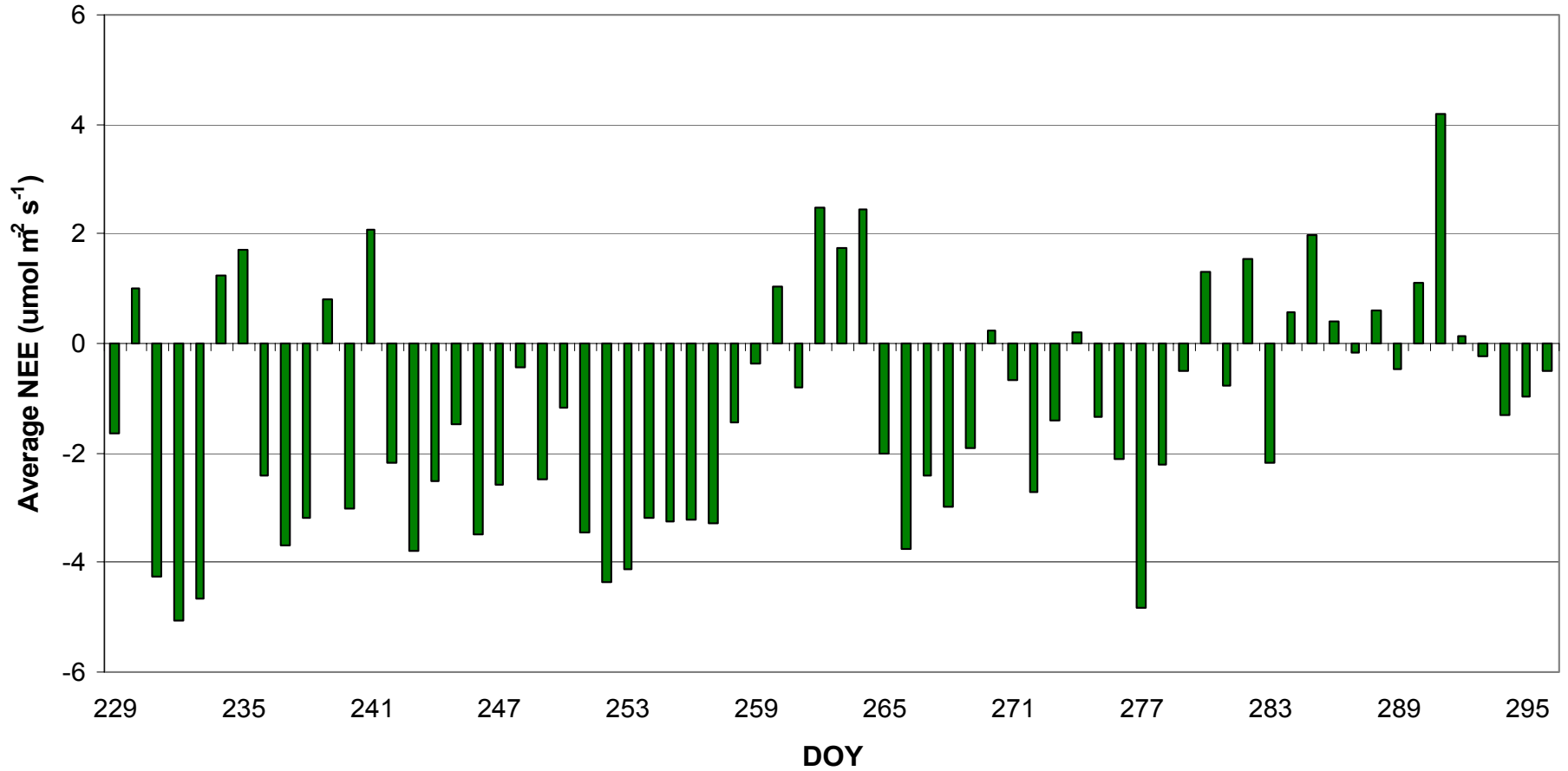
# Ile Marie-Eve





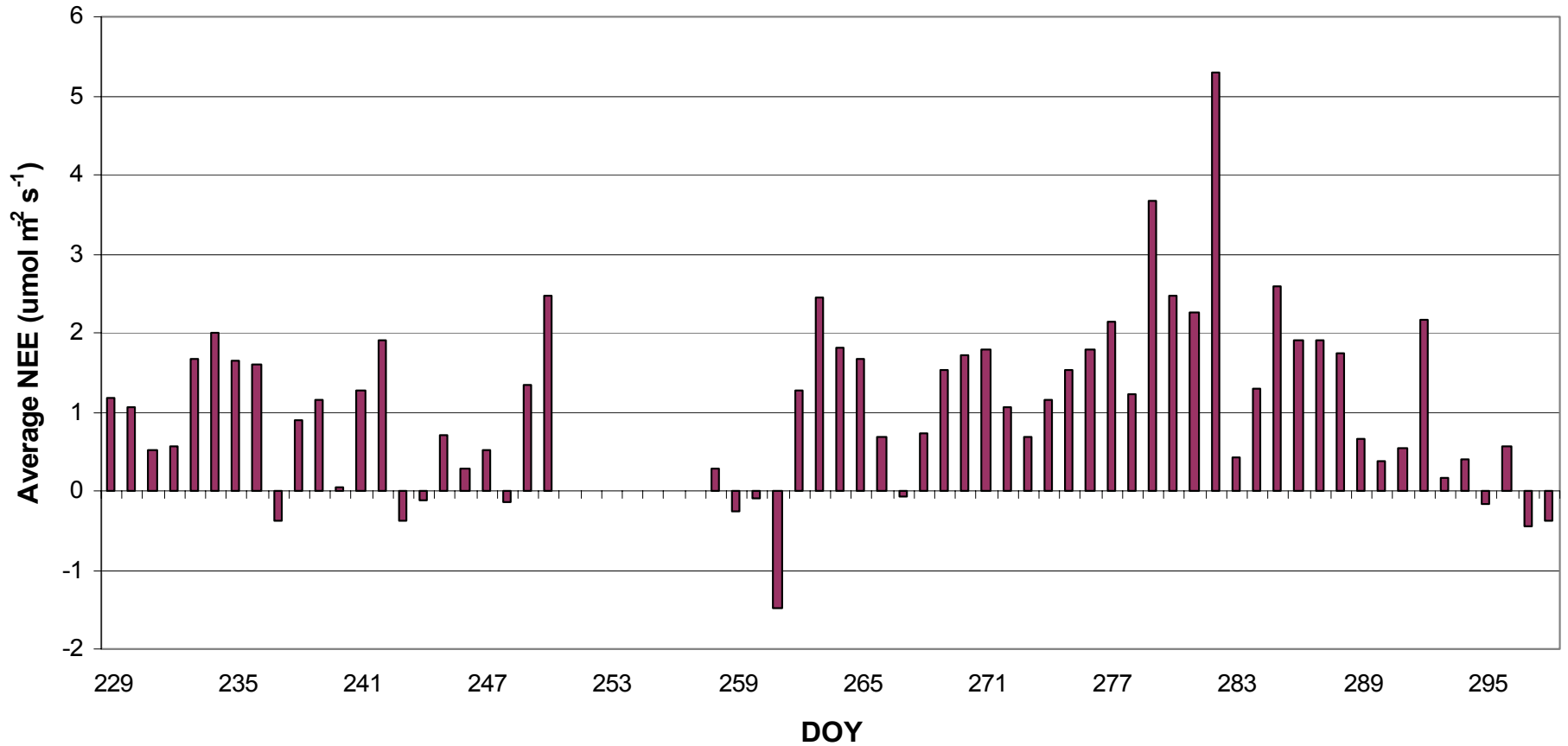
\*\*\*August 25 to September 19 only (more meteorological data to come)

# Forest: Daily NEE



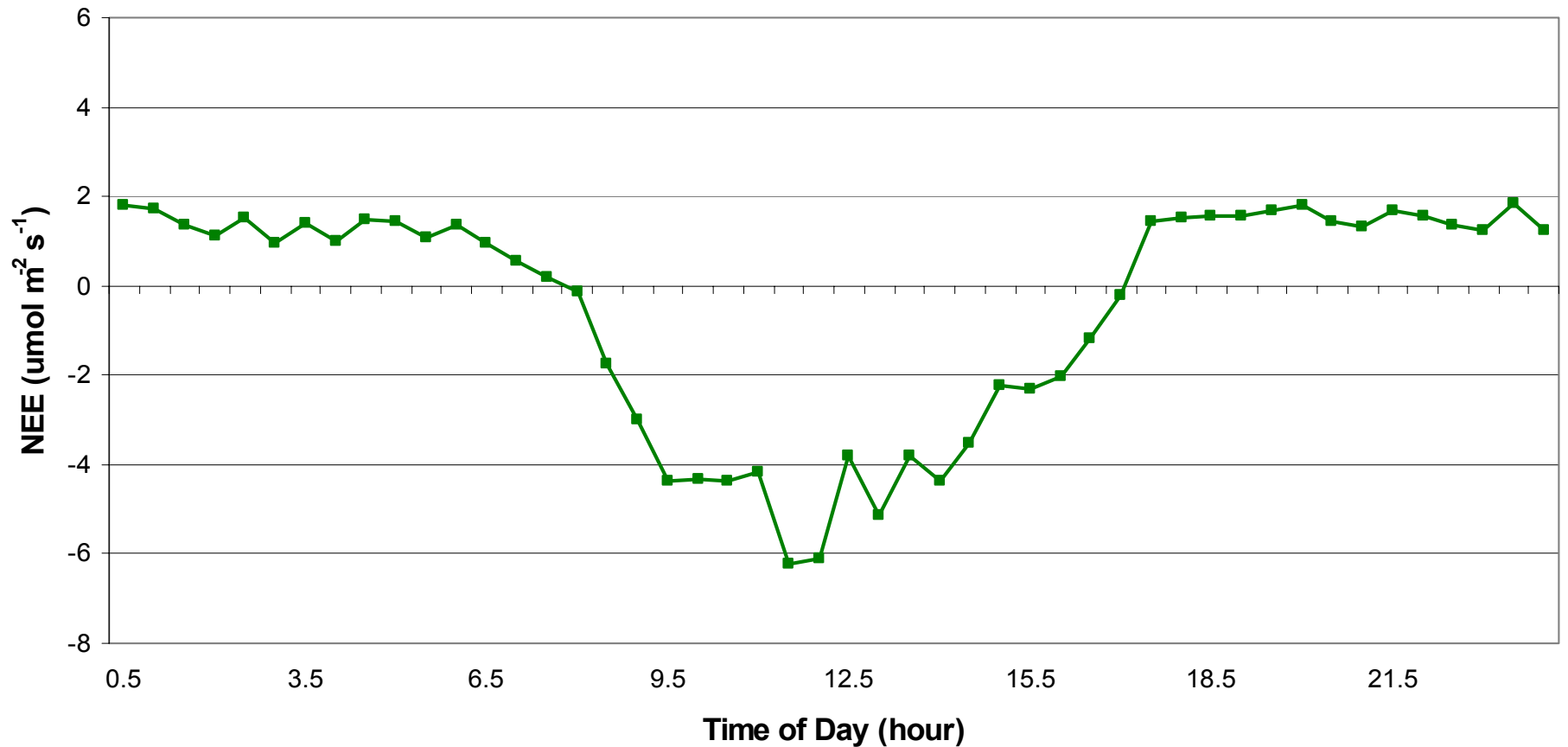
\*\*\*Uptake likely overestimated because there are very few "good" nighttime data

# Island: Daily NEE

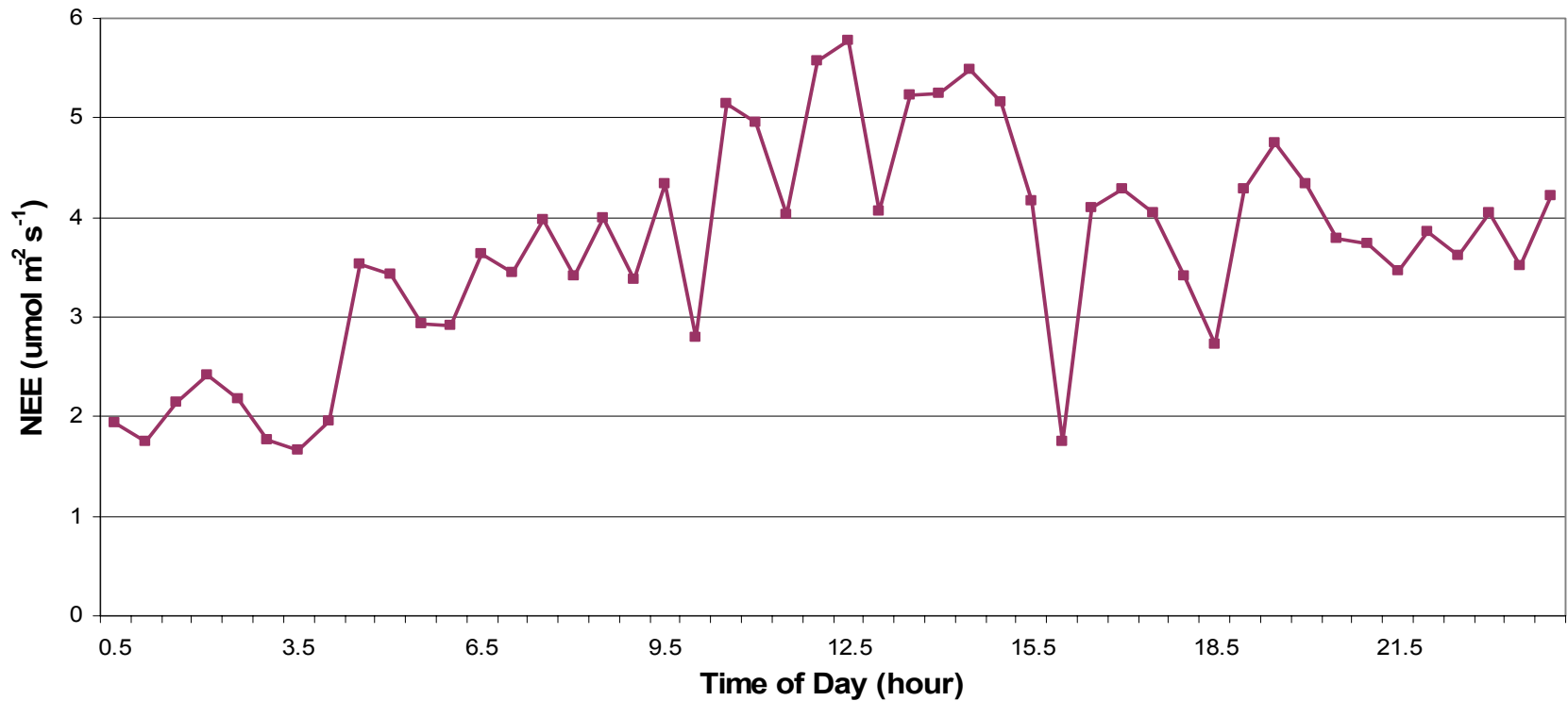


\*\*\*very few "good" nighttime data

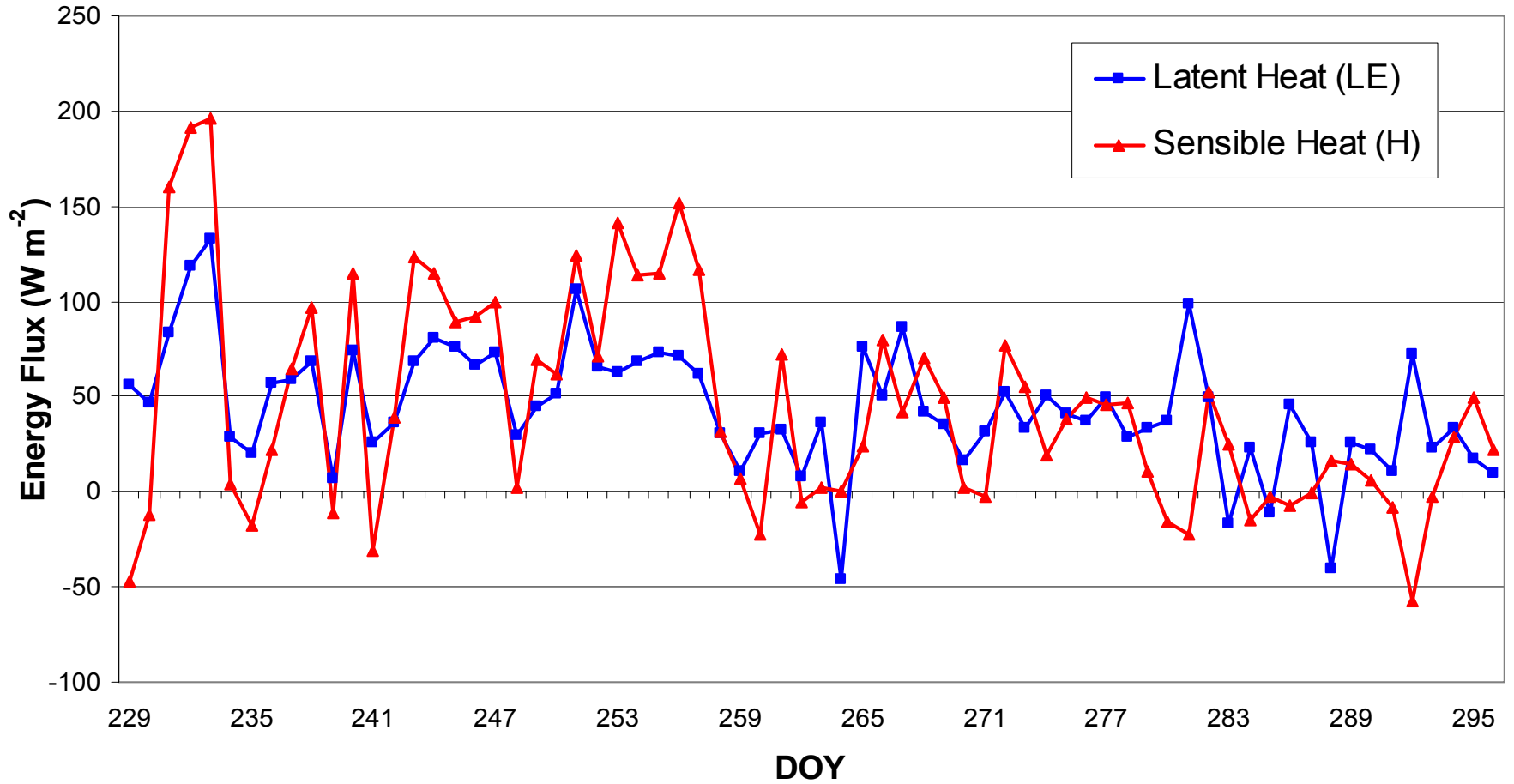
# Forest example of Diurnal NEE (Oct. 6, 2006)



# Island example of Diurnal NEE (Oct. 6, 2006)

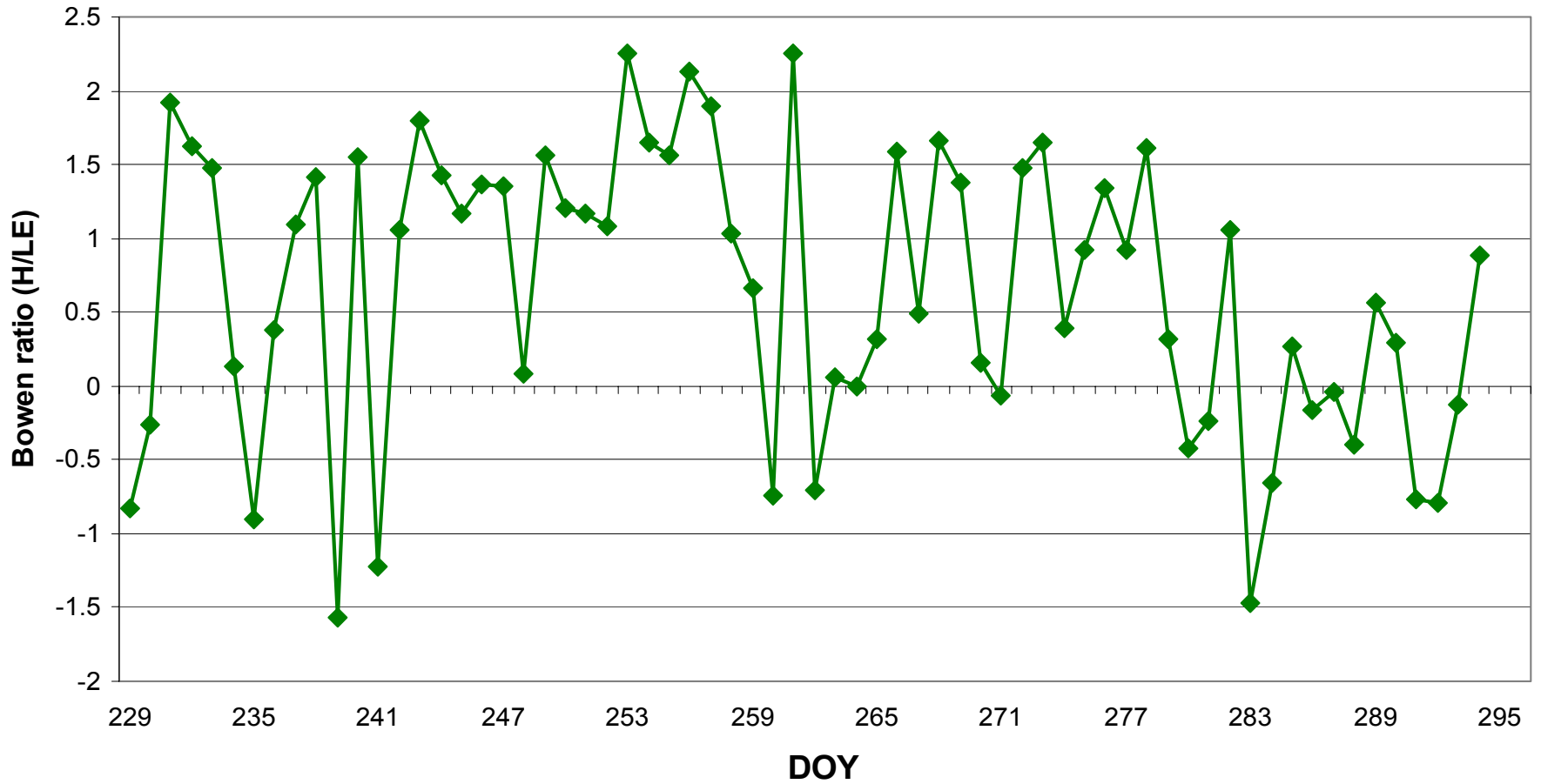


# Forest: Energy Fluxes

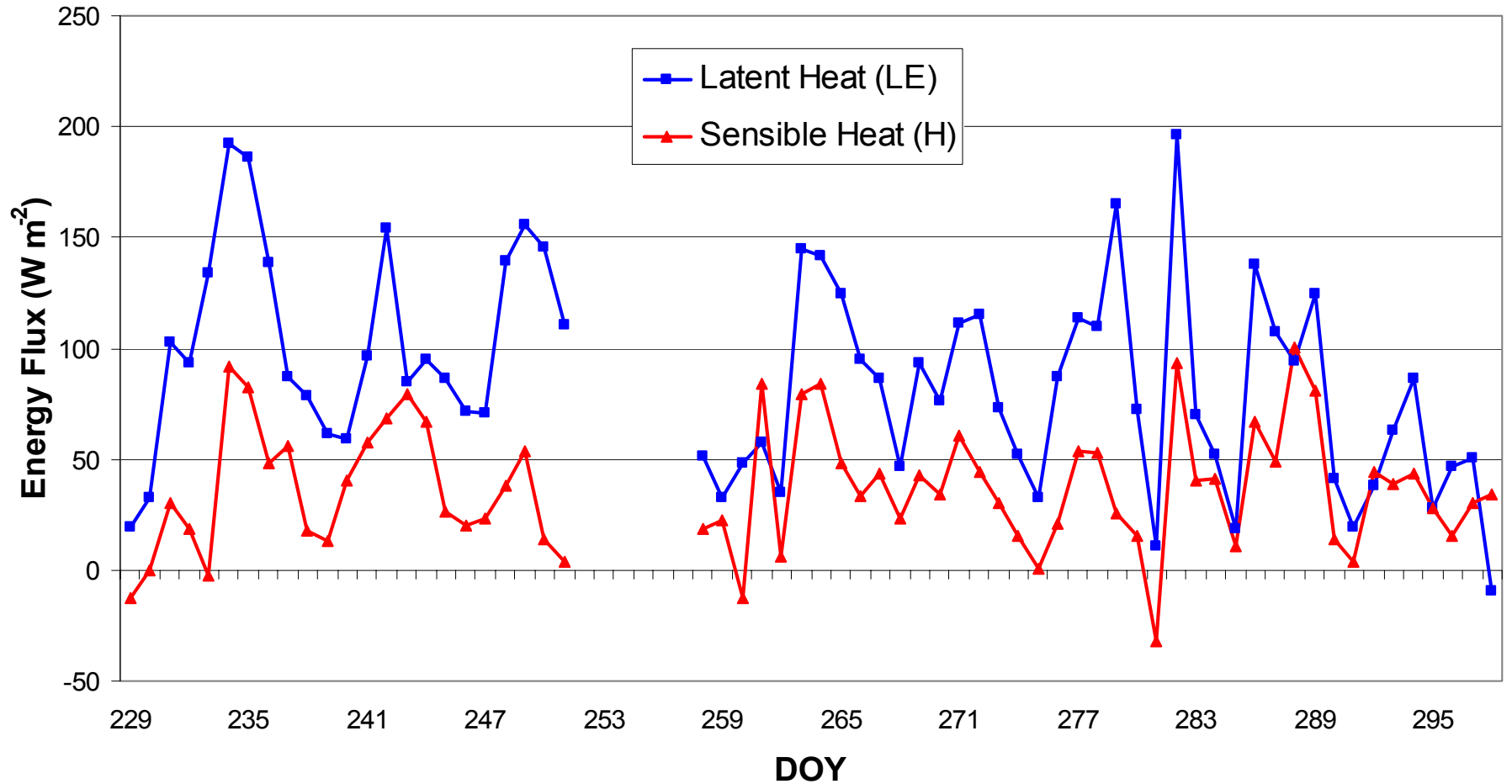


\*\*\*Daily averages

# Forest: Bowen ratio

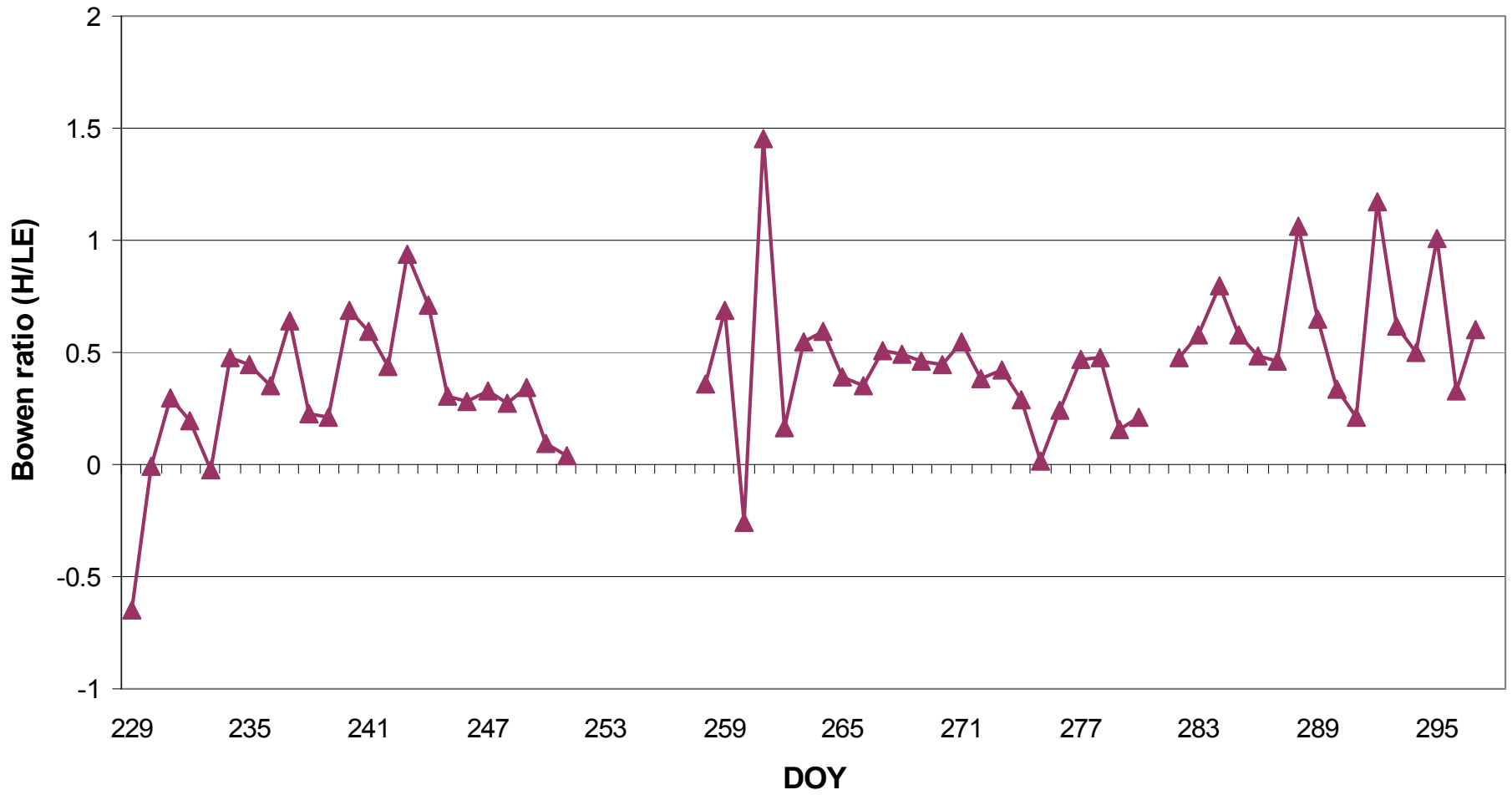


# Island: Energy Fluxes



\*\*\*Daily averages

# Island: Bowen ratio



# Much more to come...

- Thanks to:
  - Marie-Eve Lemieux
  - Jean-Louis Frechette
  - Jean-Francois Aublet
  - Marie-Claude Bonneville
  - Many others with names other than Marie et Jean...